



KIM PLATFORM

QUICK START GUIDE

*The step-by-step guide
into installing KIM,
annotating a set of
documents and running
the search interfaces*

Table of Contents

TABLE OF CONTENTS.....	2
KIM SYSTEM REQUIREMENTS:.....	3
OVERVIEW.....	4
DOWNLOADING KIM.....	4
INSTALLING KIM.....	4
STARTING KIM.....	4
STOPPING KIM.....	5
POPULATING DOCUMENTS.....	5
DEPLOYING THE WEB USER INTERFACE.....	6

KIM System Requirements:

- Intel Pentium IV 1GHz or compatible processor (over 2,5GHz recommended)
- 1,5 GB total system RAM as a minimum (2 GB recommended)
- 500 MB hard disk space
- Linux, Mac OS or Microsoft Windows (2000 SP2 / XP / 2003 / Vista / 7)
- JDK SE 1.5.0 or 1.6.0
- Servlet container or a J2EE/JEE application server (for the Web User Interface):
 - [Apache Tomcat](#) Server - 6.0 or later
 - [Mortbay Jetty](#) 6.1 or later
 - [Sun Glassfish](#) v2 or later
 - [RedHat JBoss](#) 4.2.3 or later

Overview

Welcome to KIM - the Knowledge and Information Management platform!

If you have visited our homepage and exclaimed “I want to try it!” this guide is for you. However, you have been warned that it is much easier to evaluate KIM through one of our public showcases.

The following steps will show you how to:

- install and run the KIM server
- feed it with documents
- start the web interface


Downloading KIM

You can download KIM from our [website](#).

KIM is free for non-commercial use. For commercial use - licences start from 3800 Euro and go up with the scale of the servers you use to run the platform. For more information, please read our [Licence Agreement](#).

Installing KIM

In order to install KIM:

1. Extract the KIM archive in the desired location (for convenience we'll call it KIM).
 We recommend a path with no whitespaces in it.
2. Point the **JAVA_HOME** environment variable to the location of the JDK you are going to use with KIM

or

Set a local **JAVA_HOME** variable for KIM. Open the **KIM\bin\config\config** script, uncomment and edit this line: Set **JAVA_HOME=<enter path to JDK here>**
3. (For Linux or Mac) Make all shell scripts executable either by running the utility **KIM/bin/utils/chmod_all.sh** once, or by executing the command **chmod -R +x KIM/bin**.

For more details, see the Installation Guide in the [KIM 3 System Documentation](#).

Starting KIM

To start KIM you can run **kim start**, or just **kim**, from the **KIM/bin** folder.

The log messages will show the initialization of the different KIM components:

(The SwiftOWLIM repository starts and configures the ontology files for loading.)

```
[INFO] OwlImSchemaRepository: 3.3
[INFO] Build date: 06-22-2010 11:57
[INFO] Configured parameter 'imports' to
'kb/owl/owl.rdfs;
kb/owl/protons.owl;
kb/owl/protont.owl;
kb/owl/protonu.owl;
```

(KIM starts listening for local Java RMI connections on port 1099.)

```
KIMService registered on port 1099
```

(GATE starts, and loads our custom GATE application.)

```
GATE is AWAKE.
Loading D:\kim-platform-3.0\context\default\resources\IE.gapp
CREOLE plugin loaded: file:/D:/kim-platform-3.0/plugins/Tools/
```

(The KIM server is now up and running.)

```
KIM Server startup ended!
```

For more detailed information on these components, see the KIM Architecture in the [KIM 3 System Documentation](#). If you get any error messages, please consult the Troubleshooting Guide and the Administration Guide. Maybe some elements of the default configuration are not applicable to your environment.

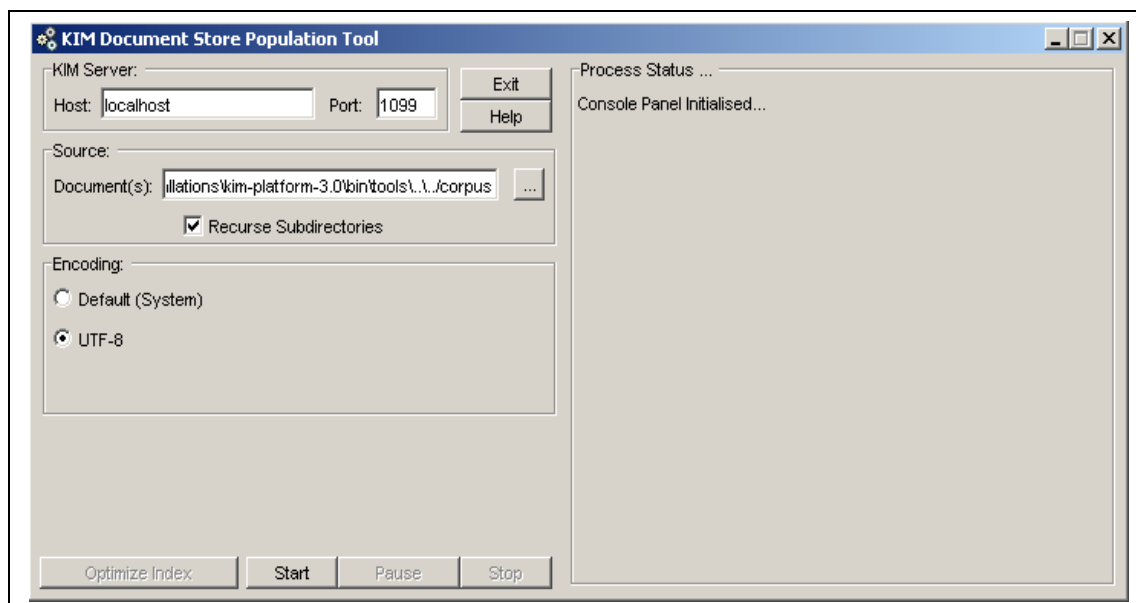
Stopping KIM

To stop KIM you can run **kim stop** from a console in the **KIM/bin** folder or press **Ctrl+C** in the terminal where it was started.

Populating Documents

Now you can load your documents in KIM.

Start the **Populator** tool by running the **populator** script from the **KIM/bin/tools** folder.



As you can see, it is set to connect to the KIM Server on localhost, port 1099. The default KIM archive comes with a sample set of documents in the **KIM/corpus** folder.

For more details on how to set up the **Populater**, what the different running scenarios are, and how to load documents in different modes, see the complete **Populater** Documentation in the [KIM 3 System Documentation](#).

Deploying the Web User Interface

To enable the Web User Interface (UI) for any servlet container, copy the **KIM/KIM Clients/KIM.war** file to the content delivery folder of your servlet container.

🔴 For Apache Tomcat this is the **webapps** folder (for details, see the [Apache website](#)).

By default, in Tomcat the KIM Web UI is available at <http://localhost:8080/KIM>. But this can be different, depending on your web server or its configuration.

🔴 The Web UI uses the KIM server so you need to have it running all the time (see the KIM Architecture).

Now you are ready to explore your documents, data and structured knowledge.

Enjoy!

The Kim Team @ Ontotext